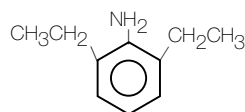


Description

Chemical intermediate for pesticides, dyestuffs, antioxidants and other products.



2,6-DIETHYLANILINE
CAS 579-66-8

Typical Properties

Form	clear liquid*
Color	yellow to red*
Molecular weight	149.2
Freezing point, °C (°F)	3 (37)
Vapor pressure at 20°C, mm.....	0.02
Boiling point, °C (°F)	243 (469)
Density at 20°C (68°F) g/mL.....	0.959
lb/gal.....	8.00
Flash point (TCC), °C (°F)	104 (219)
Viscosity at 20°C, centistokes	4.6

*Darkens with time and exposure to air.

Solubility (Wt. % at 20°C)

Iso-octane	miscible
Toluene	miscible
Ethyl alcohol	miscible
1 N HCl	forms insoluble hydrochloride
Water	0.12

Shipping Information

Container Information:

Tank cars	
Tank trucks	
Drums, steel, non-returnable	55-gal
Net contents, gal. (nominal)	53
Net contents, lb.	425
Tare, lb., approx.	48
Specification, ICC	17E

Shipping Classifications:

U.S. DOT:	not regulated in transportation
IMCO or ICAO:	not regulated in transportation

Toxicology

For information on the toxicology and safe handling of this product, refer to the Material Safety Data Sheet. Copies are available upon request.

The information presented herein is believed to be accurate and reliable, but is presented without guarantee or responsibility on the part of Albemarle Corporation. It is the responsibility of the user to comply with all applicable laws and regulations and to provide for a safe workplace. The user should consider any health or safety hazards or information contained herein only as a guide, and should take those precautions which are necessary or prudent to instruct employees and to develop work practice procedures in order to promote a safe work environment. Further, nothing contained herein shall be taken as an inducement or recommendation to manufacture or use any of the herein materials or processes in violation of existing or future patents.



AMERICAS 451 Florida Street • Baton Rouge, Louisiana 70801-1765 • Phone: 225-388-7402 • Toll-Free: 800-535-3030 • Fax: 225-388-7848
EUROPE Parc Scientifique Einstein • Rue du Bosquet 9 • B-1348 Louvain-la-Neuve Sud, Belgium • Phone: 32-10-48-1711 • Fax: 32-10-48-1717
ASIA PACIFIC 111 Somerset Road #13-03 • Singapore 238164 • Phone: 65-732-6286 • Fax: 65-737-4155
16th Floor, Fukoku Seimei Building • 2-2, Uchisaiwaicho, 2-Chome • Chiyoda-ku, Tokyo 100, Japan • Phone: 81-3-5251-0791 • Fax: 81-3-3500-5623
China World Tower, Room 1317 • No. 1 Jian Guo Men Wai Avenue • Beijing 100004 China • Phone: 86-10-6505-4153 • Phone: 86-10-6505-4154 • Fax: 86-10-6505-4150